



34° Coupe Fribourgeoise de ski nordique 2024
34° Freiburger Langlauf Cup 2024
27° Coupe Fribourgeoise de ski nordique enfant 2024
27° Freiburger Langlauf Kindercup 2024



Liste des résultats

Rangliste

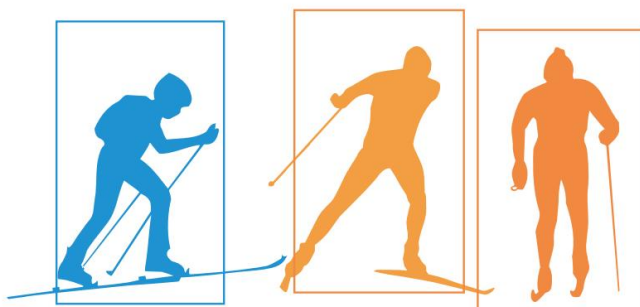
Dimanche 14 janvier 2024

Sonntag, 14. Januar 2024

Semi-marathon de l'Etoile

Centre Nordique La Cuva

Course individuelle
Style Skating



SKI CLUB L'ETOILE
GRATTAVACHE - LE CRÊT



Semi-Marathon de l'Etoile

Fond

Classement officiel



JURY DE COMPETITION

| | |
|---------------------|---------------|
| DELEGUE TECHNIQUE | Gilbert Gonet |
| DIRECTEUR D'EPREUVE | Daniel Dévaud |

CARACTERISTIQUE DE LA PISTE

| | |
|-----------------------|-------------------------|
| PISTE | Centre nordique Le Crêt |
| POINT LE PLUS HAUT | 1320 m |
| POINT LE PLUS BAS | 1260 m |
| DIFFERENCE D'ALTITUDE | 60 m |
| MONTEE TOTALE | 80 m |
| MONTEE MAXIMALE | 30 m |
| LONGEUR D'UN TOUR | 3500 m |
| NOMBRE DE TOURS | 5 |
| DISTANCE DE L'EPREUVE | 17.400 km |

LIEU : Centre nordique - La Cuva

STYLE : Libre

METEO : Ensoleillé NEIGE : Poudreuse

TEMPERATURE NEIGE : -5° AIR : -6°

LISTE n°6094

INSCRITS : 185

PARTANTS : 173

ABANDONS : 1

DISQUALIFIES : 0

CLASSES : 133

| Cl | Dos. | Code | Nom et prénom | Année | Comité | Club |
|----|------|------|---------------|-------|--------|------|
|----|------|------|---------------|-------|--------|------|

MU10 0.9 km

| | | | | | | |
|----|-----|--------|-------------------|------|------|-------------------------------|
| 1 | 367 | 37383 | Buchs Nayla | 2014 | SROM | Goupils Alpes Vaudoises |
| 2 | 371 | 37386 | Desplands Leticia | 2015 | SROM | Goupils Alpes Vaudoises |
| 3 | 368 | 47817 | Charrière Emilie | 2014 | SROM | Riaz |
| 4 | 385 | 112524 | Blanc Maéva | 2014 | SROM | Glisse Club Romont |
| 5 | 372 | 72061 | Fragnière Elina | 2014 | SROM | Im Fang |
| 6 | 377 | 72064 | Trchsel Fanny | 2016 | SROM | Im Fang |
| 7 | 383 | | Busslinger Julie | 2014 | SROM | Etoile de Grattavache-Le Crêt |
| 8 | 379 | | Butty Nina | 2014 | SROM | Etoile de Grattavache-Le Crêt |
| 9 | 375 | 111736 | Magnin Alice | 2015 | SROM | Glisse Club Romont |
| 10 | 370 | 103892 | Desplands Alison | 2016 | SROM | Goupils Alpes Vaudoises |
| 11 | 378 | | Moret Delphine | 2016 | SROM | Etoile de Grattavache-Le Crêt |
| 12 | 376 | 72082 | Pasquier Nora | 2016 | SROM | Im Fang |
| 13 | 380 | | Brenner Lara | 2014 | SROM | Etoile de Grattavache-Le Crêt |
| 14 | 328 | | Gachet Sarah | 2017 | SROM | Im Fang |
| 15 | 373 | 37374 | Guillod Théa | 2016 | SROM | Goupils Alpes Vaudoises |
| 16 | 369 | 72081 | Charrière Noémie | 2016 | SROM | Im Fang |
| 17 | 382 | | Vial Leah | 2015 | SROM | Etoile de Grattavache-Le Crêt |
| 18 | 384 | | Charrière Alodie | 2016 | SROM | Im Fang |
| 19 | 381 | | Vial Emma | 2018 | SROM | Etoile de Grattavache-Le Crêt |

KU10 0.9 km

| | | | | | | |
|----|-----|--------|-----------------|------|------|-------------------------|
| 1 | 345 | 27451 | Hoffer Ugo | 2014 | SROM | Goupils Alpes Vaudoises |
| 2 | 337 | 37389 | Berdoz Gaston | 2014 | SROM | Goupils Alpes Vaudoises |
| 3 | 344 | 58034 | Gay Kasper | 2014 | SROM | Bex |
| 4 | 350 | 47816 | Rossier David | 2014 | SROM | Riaz |
| 4 | 338 | 37377 | Berdoz Justin | 2016 | SROM | Goupils Alpes Vaudoises |
| 6 | 343 | 72059 | Gachet Charles | 2014 | SROM | Im Fang |
| 7 | 346 | 103935 | Moret Jules | 2014 | SROM | Glisse Club Romont |
| 8 | 354 | 72076 | Trchsel Luca | 2014 | SROM | Im Fang |
| 9 | 340 | 72086 | Castella Simon | 2016 | SROM | Im Fang |
| 10 | 349 | 103933 | Pratley Anthony | 2014 | SROM | Glisse Club Romont |

| Clit | Dos. | Code | Nom et prénom | Année | Comité | Club |
|------|------|--------|------------------|-------|--------|-------------------------------|
| 11 | 353 | 72087 | Schuwey Yohan | 2015 | SROM | Im Fang |
| 12 | 348 | 72070 | Pasquier Jay | 2014 | SROM | Im Fang |
| 13 | 341 | 72068 | Charrière Isaac | 2014 | SROM | Im Fang |
| 14 | 359 | | Buchenau Dominik | 2015 | GJ | Vallée de Joux |
| 15 | 356 | | Moret Lucas | 2014 | SROM | Etoile de Grattavache-Le Crêt |
| 15 | 342 | 72069 | Charrière Ismaël | 2016 | SROM | Im Fang |
| 17 | 351 | 72053 | Schuwey Antoine | 2015 | SROM | Im Fang |
| 18 | 357 | | Moret Damien | 2014 | SROM | Etoile de Grattavache-Le Crêt |
| 19 | 347 | 109057 | Moret Marcel | 2015 | SROM | Riaz |
| 20 | 339 | 105512 | Borel Yolán | 2016 | SROM | Goupils Alpes Vaudoises |
| 21 | 352 | 109058 | Schuwey Luca | 2015 | SROM | Riaz |
| 22 | 336 | 72055 | Beaud Augustin | 2016 | SROM | Im Fang |
| 23 | 355 | 113037 | Trachsel Nils | 2018 | SROM | Im Fang |
| 24 | 358 | | Garin Emilien | 2018 | SROM | Etoile de Grattavache-Le Crêt |

MU12 2 km

| | | | | | | |
|----|-----|-------|--------------------|------|------|-------------------------------|
| 1 | 309 | 72085 | Buchs Rosalie | 2012 | SROM | Im Fang |
| 2 | 317 | 72071 | Gachet Jeanne | 2012 | SROM | Im Fang |
| 3 | 311 | 72072 | Castella Julia | 2013 | SROM | Im Fang |
| 4 | 314 | 56937 | Courtin Zoé | 2012 | SROM | Glisse Club Romont |
| 5 | 312 | 47825 | Charrière Juliette | 2012 | SROM | Riaz |
| 6 | 315 | 37387 | Desplands Chloé | 2012 | SROM | Goupils Alpes Vaudoises |
| 7 | 306 | 72054 | Beaud Apolline | 2012 | SROM | Im Fang |
| 8 | 322 | 47831 | Schuwey Noëly | 2012 | SROM | Riaz |
| 9 | 323 | | Busslinger Jeanne | 2012 | SROM | Etoile de Grattavache-Le Crêt |
| 10 | 324 | | Borloz Louise | 2012 | SROM | Etoile de Grattavache-Le Crêt |

KU12 2 km

| | | | | | | |
|----|-----|--------|-------------------|------|------|-------------------------|
| 1 | 308 | 37382 | Buchs Elio | 2012 | SROM | Goupils Alpes Vaudoises |
| 2 | 326 | | Schuwey Fabien | 2013 | SROM | Im Fang |
| 3 | 318 | 47832 | Gremaud Oscar | 2013 | SROM | Riaz |
| 4 | 319 | 58033 | Mauron Ilan | 2013 | SROM | Bex |
| 5 | 327 | | Berdoz Emile | 2012 | SROM | Goupils Alpes Vaudoises |
| 6 | 320 | 47821 | Moret Gaspard | 2012 | SROM | Riaz |
| 7 | 313 | 37392 | Clot Sven | 2013 | SROM | Goupils Alpes Vaudoises |
| 8 | 321 | 47823 | Rossier Jonathan | 2012 | SROM | Riaz |
| 9 | 307 | 103934 | Borcard Bastien | 2012 | SROM | Glisse Club Romont |
| 10 | 310 | 111378 | Bussard Aloïs | 2013 | SROM | Glisse Club Romont |
| 11 | 325 | | Charrière Raphaël | 2013 | SROM | Im Fang |

Non classés



Semi-Marathon de l'Etoile
Fond
Classement officiel



| Cl | Dos. | Code | Nom et prénom | Année | Comité | Club |
|---------------------|------|--------|---------------------------|-------|--------|-------------------------------|
| Absents (12) | | | | | | |
| | 45 | | Gay Lara | 2001 | SROM | Etoile de Grattavache-Le Crêt |
| | 53 | | Rauber Sebastian | 1990 | SROM | Im Fang |
| | 54 | | Schuwey Laurent | 1974 | SROM | Im Fang |
| | 58 | | Tissières Tanja | | SROM | Im Fang |
| | 65 | | Rossier Patrick | | SROM | Riaz |
| | 256 | 47827 | Gertsch Loïs | 2008 | SROM | Riaz |
| | 276 | 47814 | Fragnière Charline | 2010 | SROM | Riaz |
| | 283 | 72063 | Müller Fanny | 2011 | SROM | Im Fang |
| | 291 | | Demierre Romain | 2011 | SROM | Im Fang |
| | 316 | 37373 | Fivat Pierre | 2013 | SROM | Goupils Alpes Vaudoises |
| | 366 | 113038 | Boschung Kyla | 2014 | SROM | Im Fang |
| | 374 | 72060 | Jaquet Charlotte | 2015 | SROM | Im Fang |
| Abandons (1) | | | | | | |
| | 284 | 37378 | Pittet Marie | 2010 | SROM | Goupils Alpes Vaudoises |



Semi-Marathon de l'Etoile

Fond

Classement officiel



JURY DE COMPETITION

| | |
|---------------------|---------------|
| DELEGUE TECHNIQUE | Gilbert Gonet |
| DIRECTEUR D'EPREUVE | Daniel Dévaud |

CARACTERISTIQUE DE LA PISTE

| | |
|-----------------------|-------------------------|
| PISTE | Centre nordique Le Crêt |
| POINT LE PLUS HAUT | 1310 m |
| POINT LE PLUS BAS | 1244 m |
| DIFFERENCE D'ALTITUDE | 66 m |
| MONTEE TOTALE | 80 m |
| MONTEE MAXIMALE | 30 m |
| LONGEUR D'UN TOUR | 3500 m |
| NOMBRE DE TOURS | 5 |
| DISTANCE DE L'EPREUVE | 17.400 km |

LIEU : Centre nordique - La Cuva

STYLE : Libre

METEO : Beau temps NEIGE : Poudreuse

TEMPERATURE NEIGE : -5° AIR : -6°

LISTE n°6094

INSCRITS : 184

PARTANTS : 168

ABANDONS : 1

DISQUALIFIES : 0

CLASSES : 167

| Clé | Dos. | Code | Nom et prénom | Année | Comité | Club | Temps | Ecart |
|-----|------|------|---------------|-------|--------|------|-------|-------|
|-----|------|------|---------------|-------|--------|------|-------|-------|

MU14 3 km

| | | | | | | | | |
|----|-----|-------|---------------------|------|------|-------------------------------|---------|---------|
| 1 | 277 | 58036 | Gay Lorine | 2011 | SROM | Bex | 9:35.0 | |
| 2 | 271 | 89290 | Arena Maëlle | 2010 | SROM | Goupils Alpes Vaudoises | 9:35.7 | 0.7 |
| 3 | 278 | 47813 | Gremaud Célia | 2010 | SROM | Riaz | 9:50.1 | 15.1 |
| 4 | 287 | 72836 | von Siebenthal Sina | 2010 | BOSV | Turbach-Bissen | 10:35.0 | 1:00.0 |
| 5 | 294 | | Lehmann Eleanora | 2011 | BOSV | Ski Club Gstaad | 10:43.8 | 1:08.8 |
| 6 | 292 | | Muller Marie | 2010 | SROM | Im Fang | 10:56.1 | 1:21.1 |
| 7 | 281 | 47826 | Moret Lily | 2010 | SROM | Riaz | 12:34.6 | 2:59.6 |
| 8 | 295 | 81961 | Deladoey Clémence | 2011 | SROM | Riaz | 12:52.9 | 3:17.9 |
| 9 | 288 | | Butty Maé | 2011 | SROM | Etoile de Grattavache-Le Crêt | 15:14.3 | 5:39.3 |
| 10 | 290 | | Busslinger Mathilde | 2010 | SROM | Etoile de Grattavache-Le Crêt | 22:29.6 | 12:54.6 |

KU14 3 km

| | | | | | | | | |
|----|-----|-------|-------------------|------|------|-------------------------------|---------|--------|
| 1 | 279 | 47835 | Gremaud Robin | 2011 | SROM | Riaz | 8:44.5 | |
| 2 | 286 | 47829 | Rossier Matthieu | 2011 | SROM | Riaz | 8:51.6 | 7.1 |
| 3 | 275 | 56931 | Courtin Hugo | 2010 | SROM | Glisse Club Romont | 8:54.6 | 10.1 |
| 4 | 272 | 37393 | Berdoz Jovian | 2010 | SROM | Goupils Alpes Vaudoises | 8:55.1 | 10.6 |
| 5 | 280 | 56933 | Moret Léo | 2010 | SROM | Glisse Club Romont | 10:01.9 | 1:17.4 |
| 6 | 285 | 56936 | Pratley Simon | 2011 | SROM | Glisse Club Romont | 10:18.8 | 1:34.3 |
| 7 | 297 | | Komandnyi Anton | 2010 | GJ | Vallée de Joux | 10:24.7 | 1:40.2 |
| 8 | 273 | 72065 | Bussard Ferdinand | 2011 | SROM | Im Fang | 10:53.9 | 2:09.4 |
| 9 | 282 | 72052 | Müller Antoine | 2011 | SROM | Im Fang | 11:15.2 | 2:30.7 |
| 10 | 289 | | Fuso Sammy | 2011 | SROM | Etoile de Grattavache-Le Crêt | 12:08.4 | 3:23.9 |
| 11 | 293 | | Schmidt Valentin | 2011 | SROM | Im Fang | 12:24.9 | 3:40.4 |
| 12 | 274 | 56930 | Courtin Erwan | 2010 | SROM | Glisse Club Romont | 12:50.5 | 4:06.0 |

MU16 6.6 km

| | | | | | | | | |
|---|-----|-------|-------------------------|------|------|--------------------|---------|--------|
| 1 | 252 | 56935 | Deschenaux Salomé | 2009 | SROM | Glisse Club Romont | 22:45.6 | |
| 2 | 263 | | Schuwey Lena | 2008 | SROM | Im Fang | 23:17.6 | 32.0 |
| 3 | 264 | | Baggish Izzabella | 2008 | SROM | Vallée de Joux | 23:59.8 | 1:14.2 |
| 4 | 257 | 47820 | Morgan de Paula Felicia | 2009 | SROM | Riaz | 25:34.0 | 2:48.4 |
| 5 | 254 | 47819 | Gauthey Estelle | 2009 | SROM | Riaz | 26:27.0 | 3:41.4 |
| 6 | 251 | 56934 | Clerc Roxane | 2009 | SROM | Glisse Club Romont | 26:55.1 | 4:09.5 |



Semi-Marathon de l'Etoile
Fond
Classement officiel



| Cl't | Dos. | Code | Nom et prénom | Année | Comité | Club | Temps | Ecart |
|------|------|-------|----------------|-------|--------|------|---------|--------|
| 7 | 259 | 47828 | Ruffieux Manon | 2009 | SROM | Riaz | 31:20.7 | 8:35.1 |

KU16 6.6 km

| | | | | | | | | |
|---|-----|-------|------------------|------|------|-------------------------|---------|--------|
| 1 | 258 | 47824 | Rossier Julien | 2008 | SROM | Riaz | 17:45.0 | |
| 2 | 260 | 47833 | Scaiola Paul | 2009 | SROM | Riaz | 18:00.4 | 15.4 |
| 3 | 255 | 58035 | Gay Kevan | 2008 | SROM | Bex | 19:42.4 | 1:57.4 |
| 4 | 265 | | Lehmann Jean-Luc | 2008 | BOSV | Ski Club Gstaad | 19:49.0 | 2:04.0 |
| 5 | 262 | 90237 | Taland Gabriel | 2009 | SROM | Vallée de Joux | 22:01.0 | 4:16.0 |
| 6 | 253 | 37394 | Desplands Lucas | 2009 | SROM | Goupils Alpes Vaudoises | 22:32.0 | 4:47.0 |
| 7 | 261 | 37385 | Sittinger Sacha | 2009 | SROM | Goupils Alpes Vaudoises | 22:56.1 | 5:11.1 |

HU18-HU20 10 km

| | | | | | | | | |
|---|---|--|------------------|------|------|-------------------------------|---------|--|
| 1 | 1 | | Lanleau Stéphane | 2006 | SROM | Etoile de Grattavache-Le Crêt | 34:55.3 | |
|---|---|--|------------------|------|------|-------------------------------|---------|--|

Open 6.6 km

| | | | | | | | | |
|----|-----|-------|----------------------|--|------|-------------------------------|-----------|---------|
| 1 | 42 | | Vial Bertrand | | SROM | Etoile de Grattavache-Le Crêt | 22:22.8 | |
| 2 | 36 | 90354 | Perrin Vincent | | SROM | Etoile de Grattavache-Le Crêt | 23:18.3 | 55.5 |
| 3 | 35 | 90327 | Oberson Nicolas | | SROM | Etoile de Grattavache-Le Crêt | 24:03.5 | 1:40.7 |
| 4 | 91 | | Arena Nadine | | SROM | Goupils Alpes Vaudoises | 26:18.1 | 3:55.3 |
| 5 | 101 | | Etter Steeve | | | Châtel-St-Denis | 26:45.5 | 4:22.7 |
| 6 | 77 | | Buchenau Carsten | | | St-Sulpice | 29:00.8 | 6:38.0 |
| 7 | 89 | | Berdoz Dominique | | SROM | Goupils Alpes Vaudoises | 30:05.0 | 7:42.2 |
| 8 | 92 | | Rossier Marie-Claude | | SROM | Riaz | 30:14.7 | 7:51.9 |
| 9 | 62 | | High Darrell | | SROM | Etoile de Grattavache-Le Crêt | 30:37.2 | 8:14.4 |
| 10 | 72 | | Pilet Christine | | SROM | Nordic Team Château-d'Oex | 42:39.8 | 20:17.0 |
| 11 | 57 | | Borloz Elena | | SROM | Etoile de Grattavache-Le Crêt | 43:35.4 | 21:12.6 |
| 12 | 60 | | Jolliet Yvan | | SROM | Glisse Club Romont | 1h04:44.4 | 42:21.6 |

Femmes 17.4 km

| | | | | | | | | |
|----|----|-------|--------------------|------|------|-------------------------------|-----------|---------|
| 1 | 49 | | Rauber Katja | 1999 | SROM | Im Fang | 57:36.1 | |
| 2 | 46 | | Brandt Carine | 1974 | SROM | Im Fang | 1h03:29.9 | 5:53.8 |
| 3 | 93 | | Savary Erica | 1973 | SROM | Riaz | 1h05:09.4 | 7:33.3 |
| 4 | 47 | | Charrière Gabriela | 1992 | SROM | Im Fang | 1h06:25.8 | 8:49.7 |
| 5 | 78 | | Reichenbach Jenny | 1991 | | Gsteig-Feutersoey | 1h09:54.1 | 12:18.0 |
| 6 | 21 | 89062 | Arena Ambre | 2003 | SROM | Goupils Alpes Vaudoises | 1h11:22.0 | 13:45.9 |
| 7 | 82 | | Baechtold Chloé | 1999 | | Vortex Race | 1h11:41.5 | 14:05.4 |
| 8 | 26 | 90350 | Deparis Véronique | 1975 | SROM | Etoile de Grattavache-Le Crêt | 1h17:53.3 | 20:17.2 |
| 9 | 48 | | Mooser Elisabeth | 1955 | SROM | Im Fang | 1h18:38.4 | 21:02.3 |
| 10 | 94 | | Balmat Charline | 2000 | SROM | Etoile de Grattavache-Le Crêt | 1h20:38.8 | 23:02.7 |

H1 17.4 km

| | | | | | | | | |
|---|----|-------|---------------|------|------|-------------------------|---------|--------|
| 1 | 63 | | Mauron Lars | 1999 | SROM | Plasselb | 48:53.4 | |
| 2 | 37 | 36591 | Piguet Lucien | 2003 | SROM | Goupils Alpes Vaudoises | 50:03.5 | 1:10.1 |

| Cl't | Dos. | Code | Nom et prénom | Année | Comité | Club | Temps | Ecart |
|------|------|-------|--------------------|-------|--------|----------------------|-----------|---------|
| 3 | 74 | | Gorshkov Nikita | 1993 | | Ski MSU | 51:11.2 | 2:17.8 |
| 4 | 33 | 46455 | Morard Quentin | 2001 | SROM | Riaz | 52:00.2 | 3:06.8 |
| 5 | 83 | | Favre Robin | 1998 | | Vortex Race | 52:26.8 | 3:33.4 |
| 6 | 29 | 46690 | Jenni Gaëtan | 2003 | SROM | Riaz | 52:29.4 | 3:36.0 |
| 7 | 55 | | Tissières Mathieu | 1990 | SROM | Im Fang | 53:14.5 | 4:21.1 |
| 8 | 79 | | Romang Neil | 1995 | | Gsteig-Feutersoey | 53:58.6 | 5:05.2 |
| 9 | 81 | | Sechaud Ludovic | 2000 | | Vortex Race | 57:32.1 | 8:38.7 |
| 10 | 97 | | Schorderet Forrest | 1995 | | Jongny | 57:57.9 | 9:04.5 |
| 11 | 73 | | Ruffieux Jonas | 1998 | | Moléchaux Sport team | 1h02:41.7 | 13:48.3 |
| 12 | 99 | | Ruffieux Thomas | 1992 | | Moléchaux Fans-club | 1h12:00.0 | 23:06.6 |

H2 17.4 km

| | | | | | | | | |
|----|-----|-------|-----------------------|------|------|-------------------------------|-----------|---------|
| 1 | 27 | 65441 | Gasche Christoph | 1986 | SVL | Obergoms | 48:40.1 | |
| 2 | 24 | 88203 | Buchs Andreas | 1981 | SROM | Goupils Alpes Vaudoises | 48:58.2 | 18.1 |
| 3 | 31 | 90205 | Laubscher Samy | 1986 | SROM | Vallée de Joux | 49:22.2 | 42.1 |
| 4 | 44 | | Fuso Luca | 1977 | SROM | Etoile de Grattavache-Le Crêt | 50:23.1 | 1:43.0 |
| 5 | 96 | | Rossier Alain | 1979 | SROM | Nordic Team Château-d'Oex | 52:24.0 | 3:43.9 |
| 6 | 41 | 90202 | Taland Rémi | 1979 | SROM | Vallée de Joux | 53:14.4 | 4:34.3 |
| 7 | 67 | | Trachsel Beat | 1986 | SROM | Plasselb | 53:23.2 | 4:43.1 |
| 8 | 98 | | Komandnyi Ivan | 1984 | GJ | Vallée de Joux | 53:58.3 | 5:18.2 |
| 9 | 59 | | Gremaud Laurent | 1975 | SROM | Riaz | 54:23.8 | 5:43.7 |
| 10 | 23 | 88252 | Berdoz Clément | 1982 | SROM | Goupils Alpes Vaudoises | 56:11.0 | 7:30.9 |
| 11 | 61 | | Lehmann Andreas | 1979 | BOSV | Ski Club Gstaad | 57:42.3 | 9:02.2 |
| 12 | 90 | | Grandjean Frédéric | 1980 | SROM | Goupils Alpes Vaudoises | 58:19.2 | 9:39.1 |
| 13 | 43 | | Brenner Andrew | 1978 | SROM | Etoile de Grattavache-Le Crêt | 58:21.2 | 9:41.1 |
| 14 | 71 | 22682 | Mercier Eric | 1983 | SROM | Nordic Team Château-d'Oex | 59:09.5 | 10:29.4 |
| 15 | 95 | | Vial Julien | 1982 | SROM | Etoile de Grattavache-Le Crêt | 59:10.7 | 10:30.6 |
| 16 | 69 | 22707 | Yersin Dominique | 1974 | SROM | Nordic Team Château-d'Oex | 59:51.9 | 11:11.8 |
| 17 | 34 | 90321 | Nourdin Gorian | 1976 | SROM | Etoile de Grattavache-Le Crêt | 1h01:24.7 | 12:44.6 |
| 18 | 100 | | Garin Stéphane | 1982 | SROM | Etoile de Grattavache-Le Crêt | 1h01:38.2 | 12:58.1 |
| 19 | 40 | 44452 | Scaiola Jean-Philippe | 1975 | SROM | Riaz | 1h02:29.3 | 13:49.2 |
| 20 | 70 | | Malet Pierrick | 1988 | | Les Paccots | 1h05:47.5 | 17:07.4 |
| 21 | 102 | | Janes Nicolas | 1981 | | Lausanne | 1h09:44.1 | 21:04.0 |

H3 17.4 km

| | | | | | | | | |
|----|----|-------|-------------------|------|------|-------------------------------|-----------|---------|
| 1 | 28 | 34871 | Graf Thomas | 1973 | SROM | Goupils Alpes Vaudoises | 51:11.3 | |
| 2 | 32 | 90306 | Mesot Jean-Pierre | 1969 | SROM | Etoile de Grattavache-Le Crêt | 54:15.3 | 3:04.0 |
| 3 | 68 | | Zbinden Peter | 1959 | SROM | Plasselb | 54:17.1 | 3:05.8 |
| 4 | 50 | | Balmer Eric | 1965 | SROM | Im Fang | 56:13.3 | 5:02.0 |
| 5 | 25 | 90307 | Currat François | 1970 | SROM | Etoile de Grattavache-Le Crêt | 58:10.0 | 6:58.7 |
| 6 | 64 | | Nagel Siegfried | 1968 | SROM | Plasselb | 59:28.1 | 8:16.8 |
| 7 | 52 | | Niquille Pascal | 1963 | SROM | Im Fang | 1h00:33.1 | 9:21.8 |
| 8 | 76 | | Ramuz Olivier | 1969 | | Ropraz | 1h00:38.7 | 9:27.4 |
| 9 | 38 | 44298 | Romanens Daniel | 1966 | SROM | Riaz | 1h01:07.1 | 9:55.8 |
| 10 | 39 | 46410 | Savary Yves | 1972 | SROM | Riaz | 1h01:54.6 | 10:43.3 |
| 11 | 66 | | Trachsel Willi | 1954 | SROM | Plasselb | 1h04:37.3 | 13:26.0 |

Scratch Homme 17.4 km

| | | | | | | | | |
|---|----|-------|------------------|------|-----|----------|---------|--|
| 1 | 27 | 65441 | Gasche Christoph | 1986 | SVL | Obergoms | 48:40.1 | |
|---|----|-------|------------------|------|-----|----------|---------|--|

| Clé | Dos. | Code | Nom et prénom | Année | Comité | Club | Temps | Ecart |
|-----|------|-------|-----------------------|-------|--------|-------------------------------|-----------|---------|
| 2 | 63 | | Mauron Lars | 1999 | SROM | Plasselb | 48:53.4 | 13.3 |
| 3 | 24 | 88203 | Buchs Andreas | 1981 | SROM | Goupils Alpes Vaudoises | 48:58.2 | 18.1 |
| 4 | 31 | 90205 | Laubscher Samy | 1986 | SROM | Vallée de Joux | 49:22.2 | 42.1 |
| 5 | 37 | 36591 | Piguet Lucien | 2003 | SROM | Goupils Alpes Vaudoises | 50:03.5 | 1:23.4 |
| 6 | 44 | | Fuso Luca | 1977 | SROM | Etoile de Grattavache-Le Crêt | 50:23.1 | 1:43.0 |
| 7 | 74 | | Gorshkov Nikita | 1993 | | Ski MSU | 51:11.2 | 2:31.1 |
| 8 | 28 | 34871 | Graf Thomas | 1973 | SROM | Goupils Alpes Vaudoises | 51:11.3 | 2:31.2 |
| 9 | 33 | 46455 | Morard Quentin | 2001 | SROM | Riaz | 52:00.2 | 3:20.1 |
| 10 | 96 | | Rossier Alain | 1979 | SROM | Nordic Team Château-d'Oex | 52:24.0 | 3:43.9 |
| 11 | 83 | | Favre Robin | 1998 | | Vortex Race | 52:26.8 | 3:46.7 |
| 12 | 29 | 46690 | Jenni Gaëtan | 2003 | SROM | Riaz | 52:29.4 | 3:49.3 |
| 13 | 41 | 90202 | Taland Rémi | 1979 | SROM | Vallée de Joux | 53:14.4 | 4:34.3 |
| 14 | 55 | | Tissières Mathieu | 1990 | SROM | Im Fang | 53:14.5 | 4:34.4 |
| 15 | 67 | | Trachsel Beat | 1986 | SROM | Plasselb | 53:23.2 | 4:43.1 |
| 16 | 98 | | Komandnyi Ivan | 1984 | GJ | Vallée de Joux | 53:58.3 | 5:18.2 |
| 17 | 79 | | Romang Neil | 1995 | | Gsteig-Feutersoey | 53:58.6 | 5:18.5 |
| 18 | 32 | 90306 | Mesot Jean-Pierre | 1969 | SROM | Etoile de Grattavache-Le Crêt | 54:15.3 | 5:35.2 |
| 19 | 68 | | Zbinden Peter | 1959 | SROM | Plasselb | 54:17.1 | 5:37.0 |
| 20 | 59 | | Gremaud Laurent | 1975 | SROM | Riaz | 54:23.8 | 5:43.7 |
| 21 | 23 | 88252 | Berdoz Clément | 1982 | SROM | Goupils Alpes Vaudoises | 56:11.0 | 7:30.9 |
| 22 | 50 | | Balmer Eric | 1965 | SROM | Im Fang | 56:13.3 | 7:33.2 |
| 23 | 81 | | Sechaud Ludovic | 2000 | | Vortex Race | 57:32.1 | 8:52.0 |
| 24 | 61 | | Lehmann Andreas | 1979 | BOSV | Ski Club Gstaad | 57:42.3 | 9:02.2 |
| 25 | 97 | | Schorderet Forrest | 1995 | | Jongny | 57:57.9 | 9:17.8 |
| 26 | 25 | 90307 | Currat François | 1970 | SROM | Etoile de Grattavache-Le Crêt | 58:10.0 | 9:29.9 |
| 27 | 90 | | Grandjean Frédéric | 1980 | SROM | Goupils Alpes Vaudoises | 58:19.2 | 9:39.1 |
| 28 | 43 | | Brenner Andrew | 1978 | SROM | Etoile de Grattavache-Le Crêt | 58:21.2 | 9:41.1 |
| 29 | 71 | 22682 | Mercier Eric | 1983 | SROM | Nordic Team Château-d'Oex | 59:09.5 | 10:29.4 |
| 30 | 95 | | Vial Julien | 1982 | SROM | Etoile de Grattavache-Le Crêt | 59:10.7 | 10:30.6 |
| 31 | 64 | | Nagel Siegfried | 1968 | SROM | Plasselb | 59:28.1 | 10:48.0 |
| 32 | 69 | 22707 | Yersin Dominique | 1974 | SROM | Nordic Team Château-d'Oex | 59:51.9 | 11:11.8 |
| 33 | 52 | | Niquille Pascal | 1963 | SROM | Im Fang | 1h00:33.1 | 11:53.0 |
| 34 | 76 | | Ramuz Olivier | 1969 | | Ropraz | 1h00:38.7 | 11:58.6 |
| 35 | 38 | 44298 | Romanens Daniel | 1966 | SROM | Riaz | 1h01:07.1 | 12:27.0 |
| 36 | 34 | 90321 | Nourdin Gorian | 1976 | SROM | Etoile de Grattavache-Le Crêt | 1h01:24.7 | 12:44.6 |
| 37 | 100 | | Garin Stéphane | 1982 | SROM | Etoile de Grattavache-Le Crêt | 1h01:38.2 | 12:58.1 |
| 38 | 39 | 46410 | Savary Yves | 1972 | SROM | Riaz | 1h01:54.6 | 13:14.5 |
| 39 | 40 | 44452 | Scaiola Jean-Philippe | 1975 | SROM | Riaz | 1h02:29.3 | 13:49.2 |
| 40 | 73 | | Ruffieux Jonas | 1998 | | Moléchaux Sport team | 1h02:41.7 | 14:01.6 |
| 41 | 66 | | Trachsel Willi | 1954 | SROM | Plasselb | 1h04:37.3 | 15:57.2 |
| 42 | 70 | | Malet Pierrick | 1988 | | Les Paccots | 1h05:47.5 | 17:07.4 |
| 43 | 102 | | Janes Nicolas | 1981 | | Lausanne | 1h09:44.1 | 21:04.0 |
| 44 | 99 | | Ruffieux Thomas | 1992 | | Moléchaux Sport team | 1h12:00.0 | 23:19.9 |

Non classés

Absents (16)

| | | | | | | | | |
|----|--|--|------------------|------|------|-------------------------------|--|--|
| 45 | | | Gay Lara | 2001 | SROM | Etoile de Grattavache-Le Crêt | | |
| 51 | | | Cottier Nicolas | 1998 | SROM | Im Fang | | |
| 53 | | | Rauber Sebastian | 1990 | SROM | Im Fang | | |
| 54 | | | Schuwey Laurent | 1974 | SROM | Im Fang | | |
| 58 | | | Tissières Tanja | | SROM | Im Fang | | |



Semi-Marathon de l'Etoile
Fond
Classement officiel



| Clf | Dos. | Code | Nom et prénom | Année | Comité | Club | Temps | Ecart |
|-----|--------|------|---------------------------|-------|--------|-------------------------|-------|-------|
| 65 | | | Rossier Patrick | | SROM | Riaz | | |
| 80 | | | Moraz Pierre | 1999 | | Tri Team Pully | | |
| 84 | | | Fisher Annabel | 1989 | | Féchy | | |
| 85 | | | Jeanneret Laura | 1998 | GJ | La Brévine | | |
| 256 | 47827 | | Gertsch Loïs | 2008 | SROM | Riaz | | |
| 276 | 47814 | | Fragnière Charline | 2010 | SROM | Riaz | | |
| 283 | 72063 | | Müller Fanny | 2011 | SROM | Im Fang | | |
| 291 | | | Demierre Romain | 2011 | SROM | Im Fang | | |
| 316 | 37373 | | Fivat Pierre | 2013 | SROM | Goupils Alpes Vaudoises | | |
| 366 | 113038 | | Boschung Kyla | 2014 | SROM | Im Fang | | |
| 374 | 72060 | | Jaquet Charlotte | 2015 | SROM | Im Fang | | |

Abandons (1)

| | | | | | | | | |
|-----|-------|--|---------------------|------|------|-------------------------|--|--|
| 284 | 37378 | | Pittet Marie | 2010 | SROM | Goupils Alpes Vaudoises | | |
|-----|-------|--|---------------------|------|------|-------------------------|--|--|